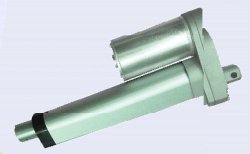
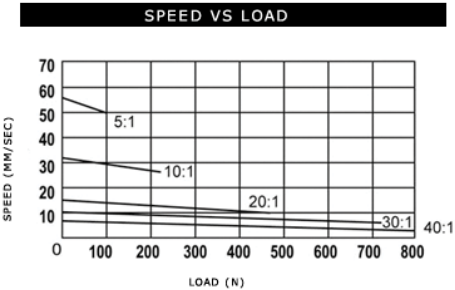
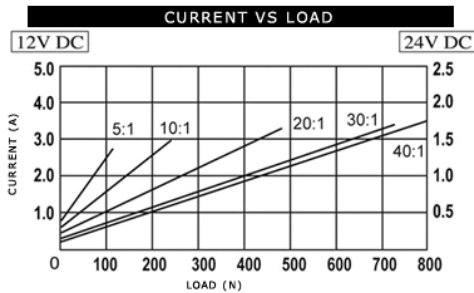


MS-3



The actuator MS-3 is compact and powerful with dimensions which enable to fit into any kind of application in Furniture and Home equipment.



Motor type	Motor 24 VDC or 12 VDC
Protection grade	IP 42
Control box	TB / TSE / TST / CBP / other standard control boxes
Push force	800 N maxi
Pull force	800 N maxi
Gear Ratio/ power-speed	5 :1 / 10 :1 / 20 :1 / 30 :1 / 40 :1
Material	Aluminium
Duty cycle	2 mn operation / 18mn stand-by (10%)
Operating temperatures	+0° to +65°
Colour	Silver Grey

Options :

Mounting hole positioning	0° or 90°
Protection grade	IP65
Intermediate stroke	3rd micro-switch
Memory/synchronisation function	With hall effect sensors

Dimensions :

Stroke	50mm	100mm	150mm	200mm	250mm	300mm
A - Retracted length	158mm	209mm	260mm	311mm	362mm	413mm
B - Extended length	208mm	309mm	410mm	511mm	612mm	713mm

Nota : other strokes upon request

